

DATA COLLECTION

- Field Marketing
- Merchandising
- Retail Audits
- Field Sales

FieldBi Retail Execution is a complete mobile data collection solution designed to build, schedule and monitor field team activities in real time. It provides tools for all types of field activities, including:

- Merchandising
- Field marketing
- Field sales
- Retail auditing

- Inspections
- Surveys
- Mobile ordering
- POS Material management

KEY BENEFITS

FOR MANAGEMENT

- Save on field operation costs by optimizing travel and eliminating paperwork
- Increase field rep performance by improving training and mentoring through monitoring
- Streamline field data collection and have immediate access to visit information

FOR FIELD REPS

- Get the job done on the spot: eliminate after-hour reporting
- Optimize customer rounds and save time and travel costs, while getting more done
- Supervisors/managers will automatically know you are properly doing your job, improving communication

HOW IT WORKS

PLAN

Office plans and schedules visits

	SUN	MON	TUE	WED
6 AM		Breakfast	Breakfast	Breakfast
7 AM		→ to campus	Study	→ to campus
		BATH 101 Res 214, 50		BATH 101 Res 214, 50
8 AM		Weekly Planning	→ to campus	Study
9 AM		BIOLOGY Res 214, 50	ENGLISH 101 Res 100, PLB	BIOLOGY Res 214, 50
10 AM		PHYSICS 101 Res 95, 57A		PHYSICS 101 Res 95, 57A

WHY FIELDBI

- **economy** - FieldBi has flexible pricing and user policy that adjusts to your business needs. For growing businesses, Auditors and reps can use their own mobile devices so there is no need for companies to invest in additional hardware.

EXECUTE

Field staff perform the requested activities in-store on mobile devices



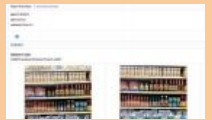
MONITOR

Office sees where field reps are and what activities are being performed



REPORT

Office creates and shares detailed reports



→ **State-of-the-art technology** - Every mobile activity is GPS and time-stamped: Fraudulent check-ins become easy to detect and dealt with. FieldBi runs on AWS Cloud. It is a secure, high-performance system that works worldwide.

→ **True offline/online capabilities** - Mobile users are able to work offline and the system synchronizes once online

→ **Cross-platform and user-friendly** - Available in English, Khmer, Laos, French..